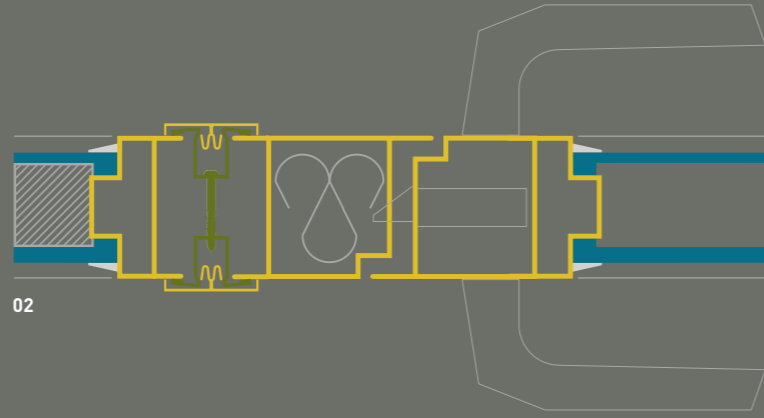
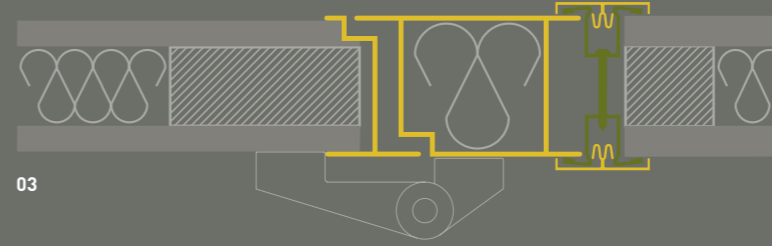


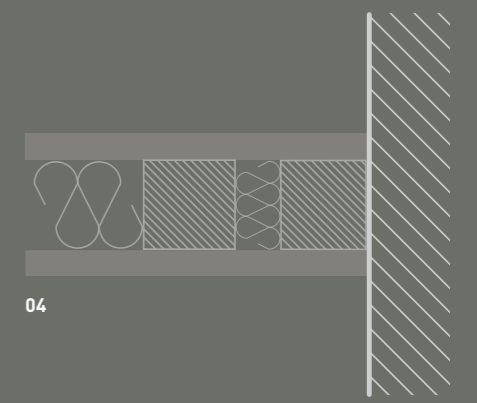
01



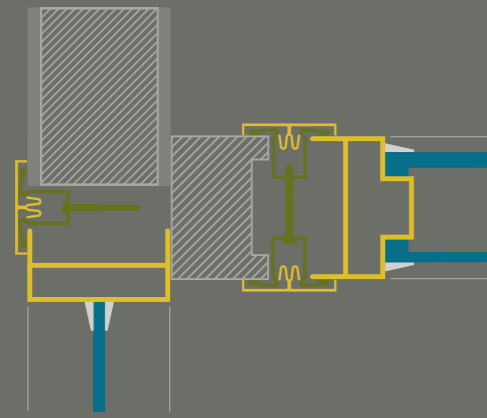
02



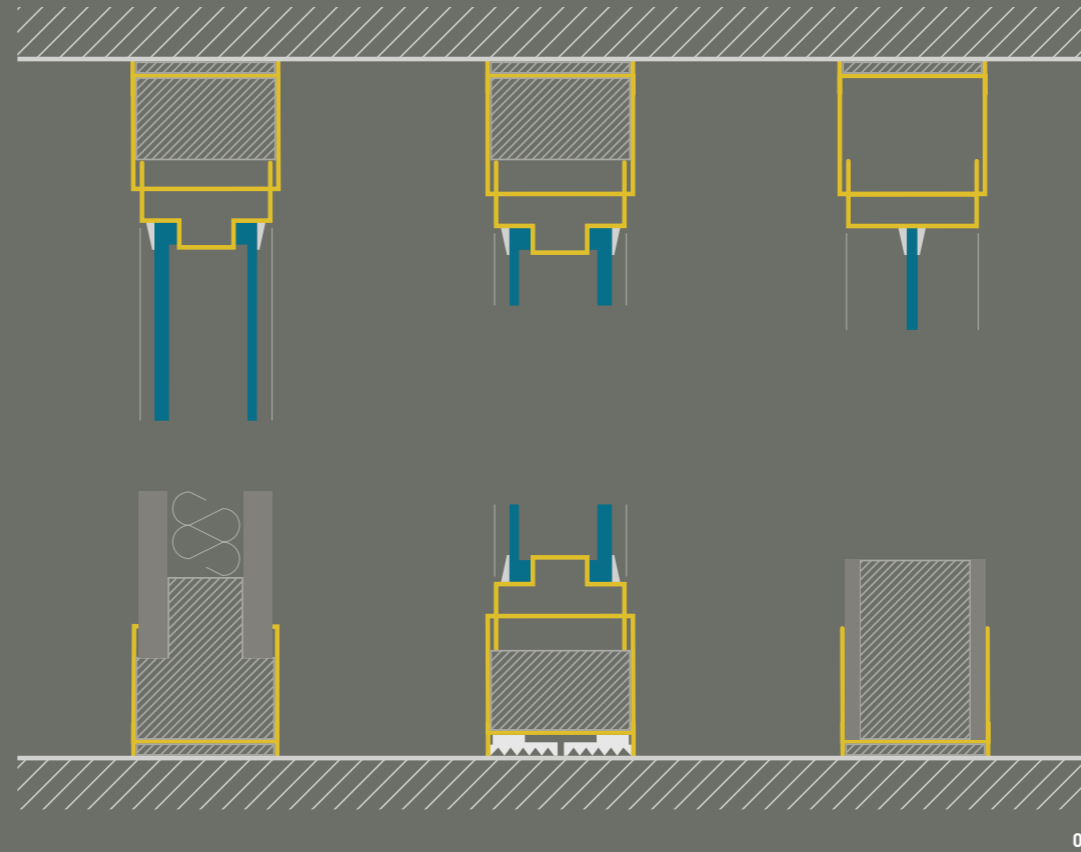
03



04



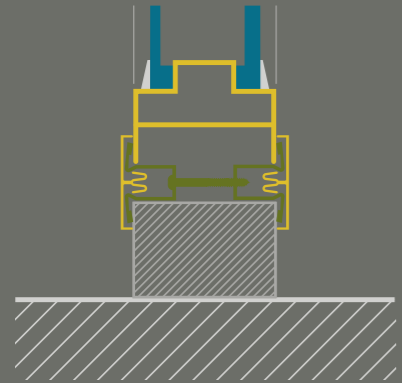
05



07



08



06

TREWAG CLASSIC. WÄNDE, DIE SICH MIT IHNEN ÄNDERN.

- 01 Eckanschluss
- 02 Verglaste Türe neben Glaselement
- 03 Volle Türe an Vollwand
- 04 Fassadenstück für Ausschnitte etc.
- 05 T-Verbindung aller Elemente
- 06 Wandanschluss an glatte Mauer

- 07 Boden- / Deckenanschlüsse, compatible Systeme
- 08 Türe oben z.B. mit Glasrahmen

- Aluminium
- Metall
- Glas